

PHLR PUBLIC HEALTH LAW RESEARCH
Making the Case for Laws that Improve Health

Full Proposal Applicant Web Conference

February 5, 2014

Public Health Law Research National Program Office



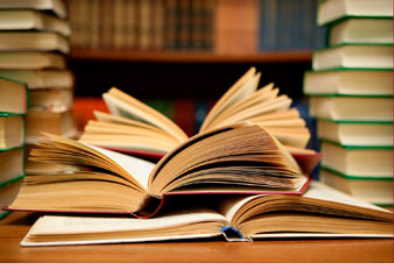
Robert Wood Johnson Foundation





Operational Issues

- This session is being recorded
- You may ask questions at any time by typing them into the Q&A panel on your screen
- Ask only general questions
- For technical assistance during the conference call, please dial:



Submitting Questions

- Use the chat bar on the left side of the screen.
- Type in your question at the bottom of the box and click “Submit”
- All questions will remain anonymous and will be answered at the end of the call.



Today's Agenda

- RWJF Program Leadership
- Public Health Law Research Program Leadership
- PHLR Web Resources
- Elements of a Successful PHLR Proposal
- Key Dates
- Your Questions



Program Leadership

Robert Wood Johnson Foundation

Paul Kuehnert

Public Health Team Director

Angie McGowan

Senior Program Officer

Tom Andruszewski

Senior Program Financial Analyst

National Program Office: Temple University

Scott Burris

Program Director

Heidi Grunwald

Deputy Director

Jennifer Ibrahim & Alex Wagenaar

Associate Directors

Bethany Swanson

Director of Communications

Michelle Mello, Jeffrey Swanson,

Jennifer Wood, Patrick Bernet and

Christopher Roberts


Methods Core Members



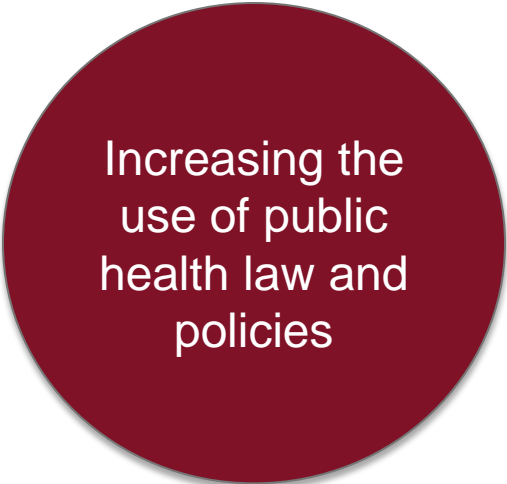
RWJF Public Health

The Robert Wood Johnson Foundation is committed to improving the health and health care of all Americans.


The Public Health Team focuses on making changes that lead to a better public health system by:



Improving
performance
of the public
health system



Increasing the
use of public
health law and
policies



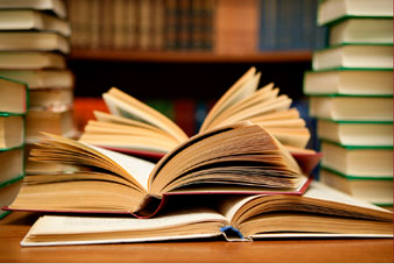
Building the
evidence for
what works



Public Health Law Research Program

The PHLR program works to build the field of scholarship and practice in public health law by:

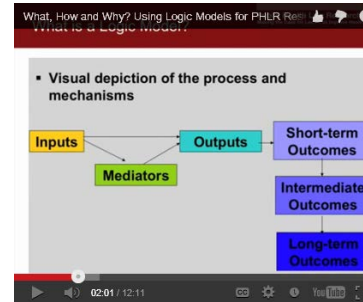
- Supporting innovative, relevant and rigorous research on the effect of laws and legal practices on health and health behavior
- Promoting the development and use of rigorous research methods
- Increasing the involvement of practitioners and practitioner perspectives in research
- Improving the dissemination of research results, and their use in public policy-making.



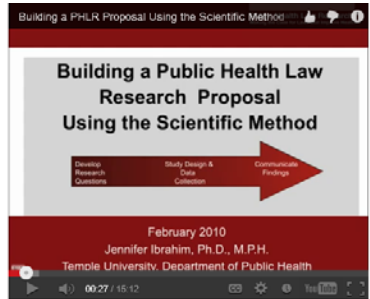
Proposal Resources



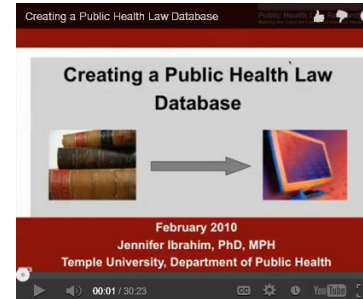
What is Public Health Law Research?



Using Logic Models for Public Health Law Research



Building a PHLR Proposal Using the Scientific Method



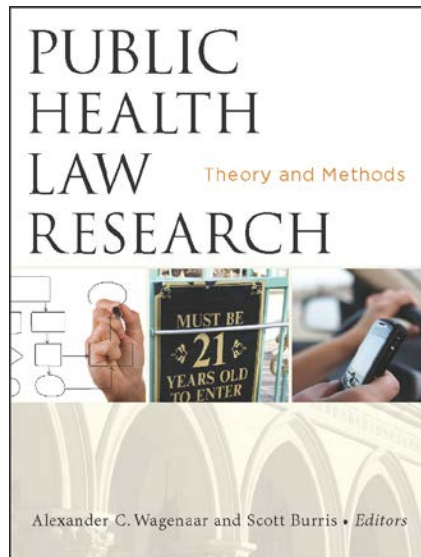
Creating a Public Health Law Database

Resources available at <http://phlr.org/resources/methods>



Rigorous Design & Methods

- Videos
- Methods Book & Monographs



A close-up photograph of the head and shoulders of a classical statue, likely Lady Justice, holding a scale of justice. The statue is positioned in the top-left corner of the slide, partially overlapping the red header.

This Year's CFP

Short-term studies

- Up to 18 months
- Total budget of up to \$150,000 each, or \$200,000 with strong justification
- Mapping studies are funded at up to \$50,000 or 12-month duration



Topic for Research

Understanding the effects of laws and legal practices on population health.



Key Dates

Proposals Due

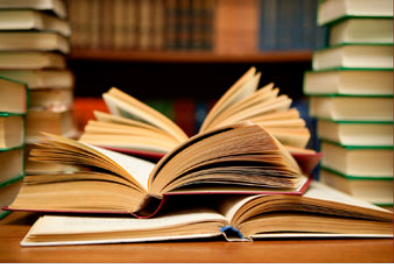
April 15, 2014 (3 p.m. ET)

**Notification of
Awards**

Mid-September 2014

Funding Initiated

November 1, 2014



Is My Idea PHLR?

Public health law research is the scientific study of the relation of law and legal practices to population health.

The range of public health topics is broad to encourage creativity and innovation.



Successful Application Elements

- Clear theory or conceptual framework
- Study design is systematic and rigorous
- Methods are clear and comprehensive
- Measures are appropriate
- High degree of innovation
- Research team expertise in their relevant disciplines and research methods
- Meaningful role for public health practitioners
- Clear demonstration of topic's relevance to and significance for public health and policy
- Sufficient budget to achieve a high level of excellence



Legal Datasets – Expectations

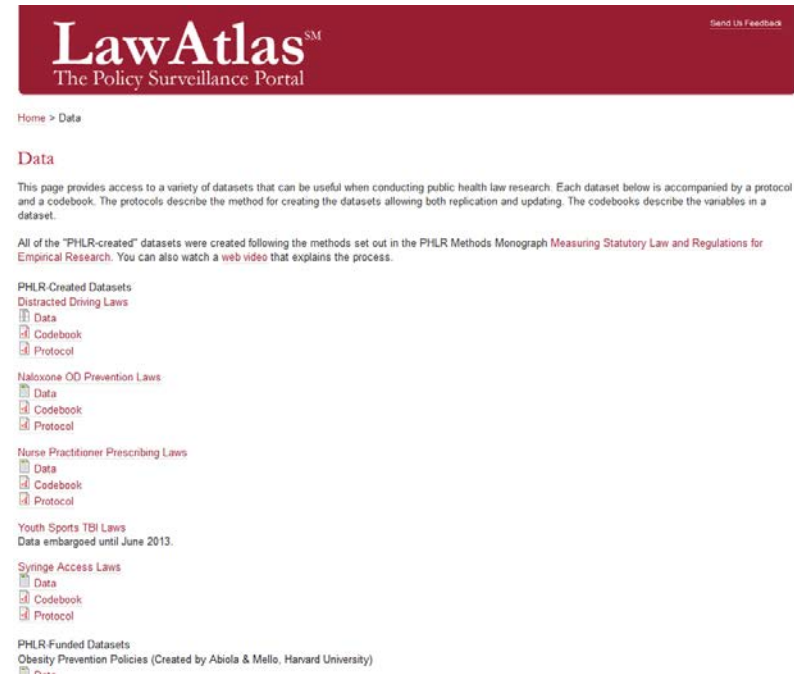
- Data on laws and cases normally will be systematically collected, coded and embodied in a dataset using LawAtlasSM
- Should use PHLR-suggested methods
- A codebook and protocol are required deliverables
- Communicate: Legal scope, timeframe, jurisdiction

LawAtlas – Examples and Existing Data

Legal datasets are available through *LawAtlas.org* and *LawAtlas.org/data*



The screenshot shows the LawAtlas.org homepage. At the top is a dark red header with the LawAtlas logo and the tagline "The Policy Surveillance Portal". Below the header, the navigation path is "Home > Interactive Portal". The main content area is titled "Distracted Driving Laws Map". On the left, there is a text block explaining that driver distraction is a major cause of fatal crashes and that MCDs are a prevalent source of distraction. Below this is a query box with a "Reset" button and a "Essential Information" tab. The query options include "At least one of these selections apply" (selected) and "All of these selections apply". The selected options are: "Pick a year", "Prohibits use of MCDs", "Ban texting", "Ban hand held use", and "Ban 'all use'". To the right of the query box is a map of the United States with state boundaries. Further right, there are sections for "Related Resources" (linking to PHLR research on MCDs and a network for public health law) and a "Curator" box for Public Health Law Research.



The screenshot shows the LawAtlas.org/data page. It features a dark red header with the LawAtlas logo and "The Policy Surveillance Portal". The navigation path is "Home > Data". The main heading is "Data". Below this, a paragraph explains that the page provides access to various datasets for public health law research, each with a protocol and codebook. A note states that all PHLR-created datasets were created following the methods in the PHLR Methods Monograph. The page lists several categories of datasets, each with links to "Data", "Codebook", and "Protocol":

- PHLR Created Datasets
 - Distracted Driving Laws
- Naloxone OO Prevention Laws
- Nurse Practitioner Prescribing Laws
- Youth Sports TBI Laws (Data embargoed until June 2013)
- Syringe Access Laws
- PHLR Funded Datasets
 - Obesity Prevention Policies (Created by Abiola & Mello, Harvard University)

Review Criteria

- Significance
- Impact
- Methods
- Team Composition
- Budget



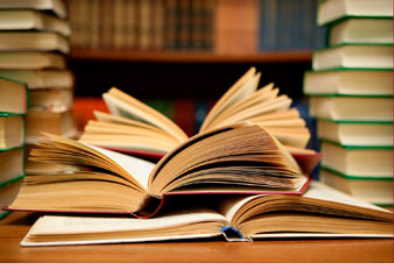
Technical Assistance

Frequently Asked Questions are available on the PHLR Website: <http://phlr.org/faq>

General Contact

Email: phlr@temple.edu

Phone: 215-204-2134



Submitting Questions

- Use the chat bar on the left side of the screen.
- Type in your question at the bottom of the box and click “Submit”
- All questions will remain anonymous and will be answered at the end of the call.



Thank You!

Proposals Due: April 15, 2014 (3 p.m. ET)

Contact

Email: phlr@temple.edu

Phone: 215-204-2134

<http://phlr.org>